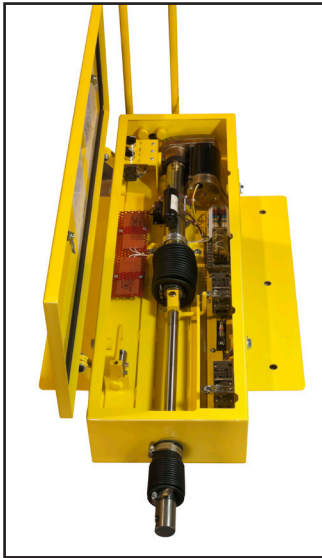


# ELECTRIC DERAIL BOX



**S**nyder's latest advancement in locomotive equipment.

As a result of Snyders ongoing research and development, the Electric Derail Box incorporates the following features:

- ✓ Hardwired and wireless
- ✓ Touchpad and keyed switches
- ✓ Straight and offset rods available
- ✓ Weather tight construction
- ✓ Lockable Service Door
- ✓ Heavy Gauge Construction Enclosure
- ✓ Powder Coated Finish
- ✓ Stainless Steel Shaft Coupler
- ✓ Universal boxes - flush mount and raised (raised 4" from ties)

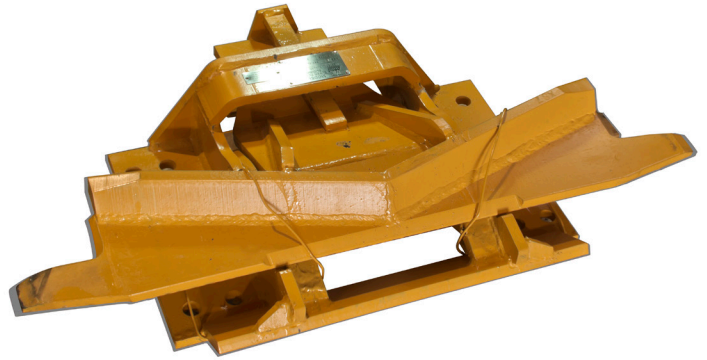


**ELECTRIC DERAIL BOX  
KEYED CONTROL PANEL**

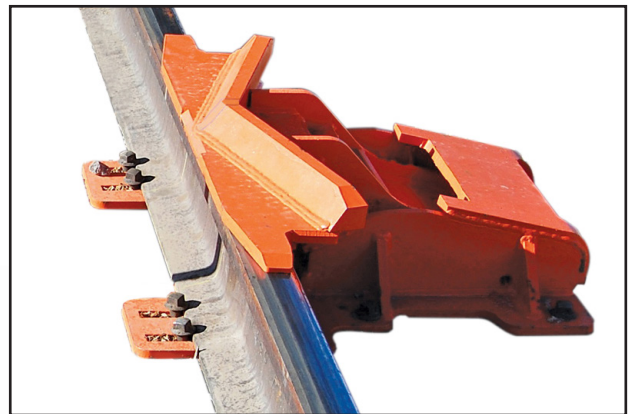
# ELECTRIC DERAIL BOX



**SLIDING DERAILER**



**SECO-EDRB-SD-CH**



**SECO-EDRB-SD-6**

**WIRELESS DERAIL SYSTEM**



**STRAIGHT AND OFFSET  
RODS AVAILABLE**

 **SNYDER**  
EQUIPMENT CO., INC.  
*Locomotive Fueling & Servicing Equipment*

Visit our web site  
for information on  
our complete line  
of quality products.

[www.snyderequip.com](http://www.snyderequip.com)

1375 W. SNYDER BOULEVARD  
NIXA, MO 65714 USA  
PH: 417-725-4067 • FX: 417-725-4846  
E Mail: [info@snyderequip.com](mailto:info@snyderequip.com)

**EXCELLING WORLDWIDE SINCE 1936**